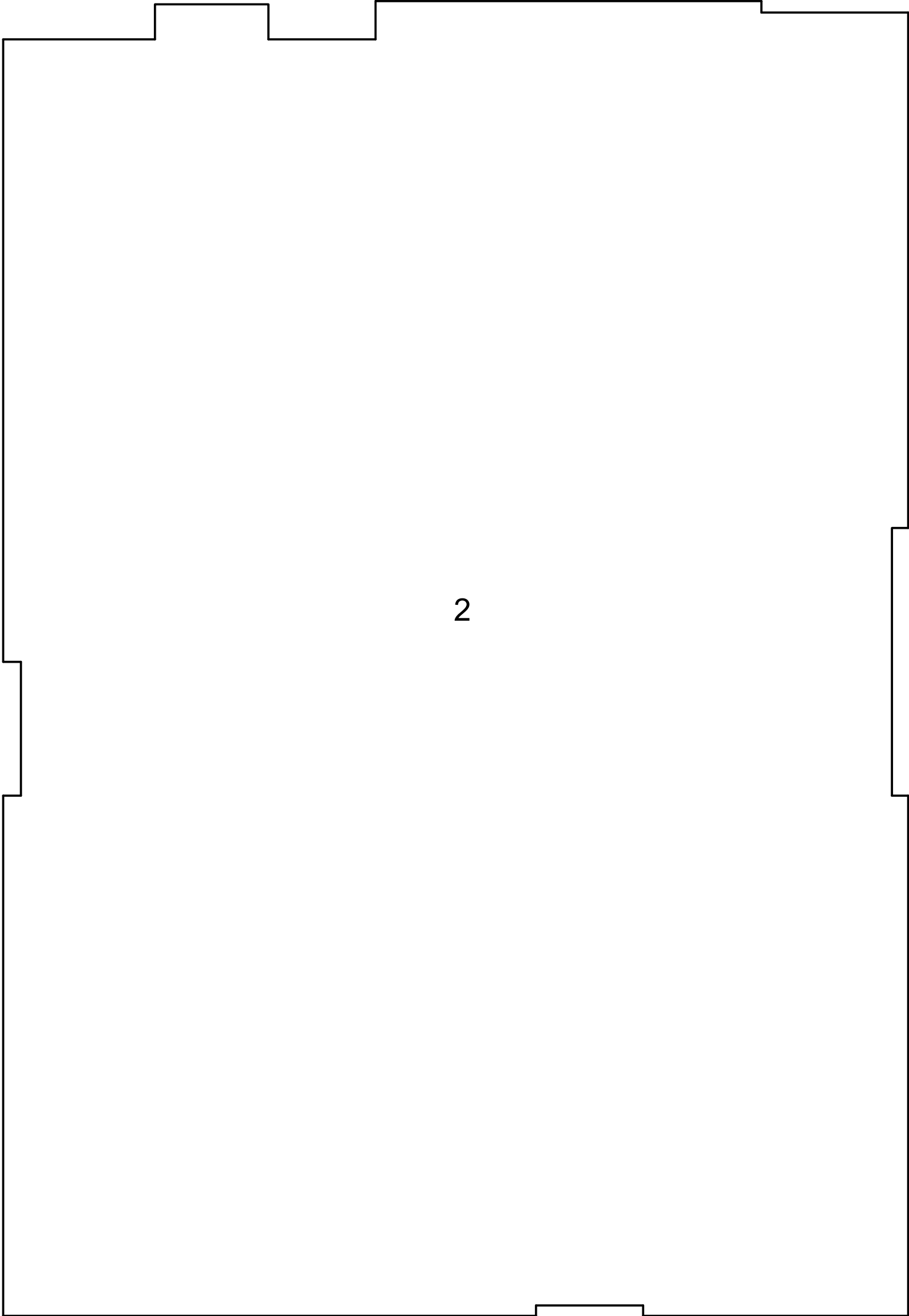
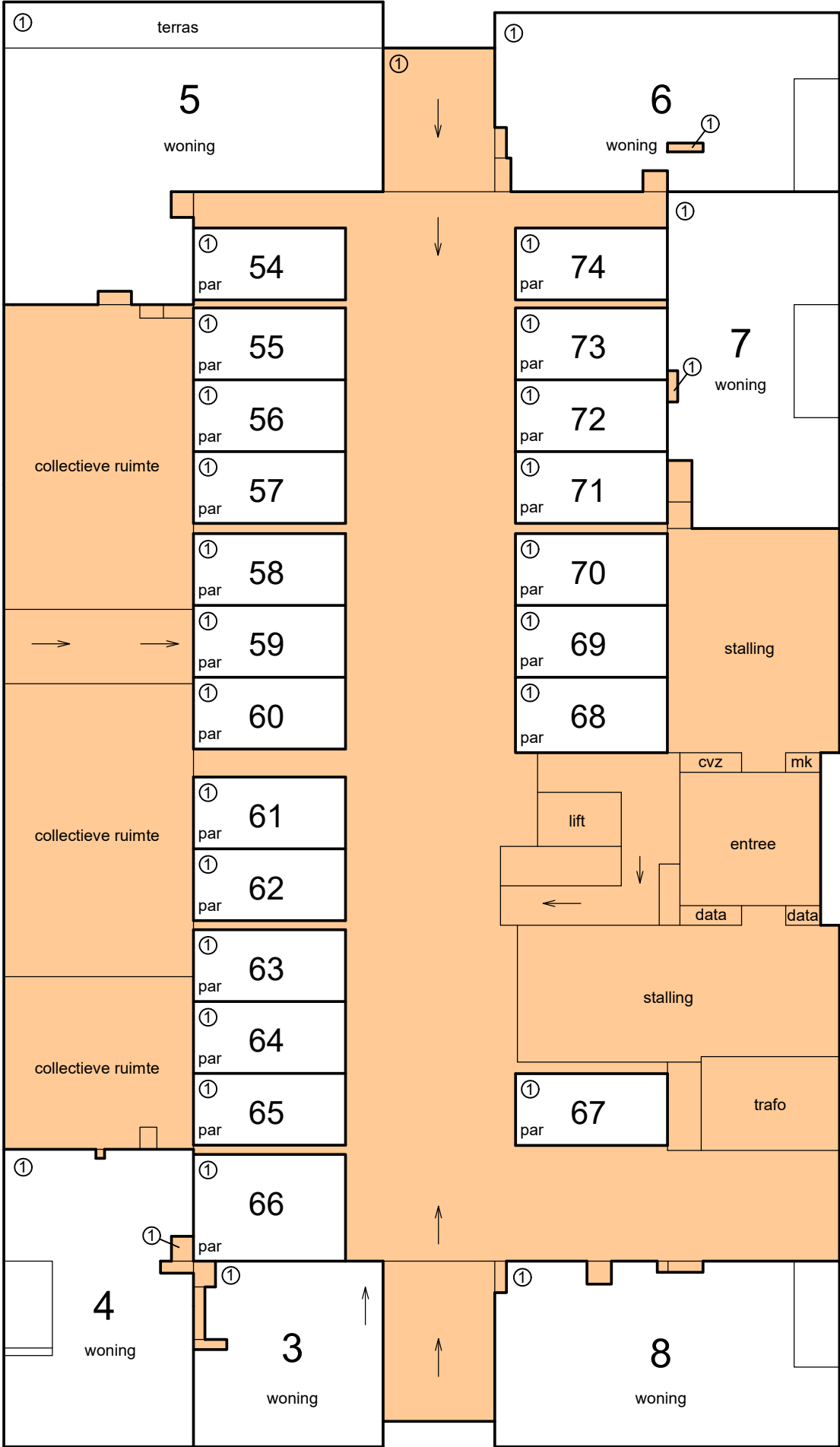


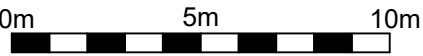
Schaal 1 : 200
= Gemeenschappelijk ondersplitsing A1
Tekening bestaat uit 7 bladen
Blad 1



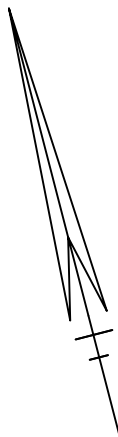
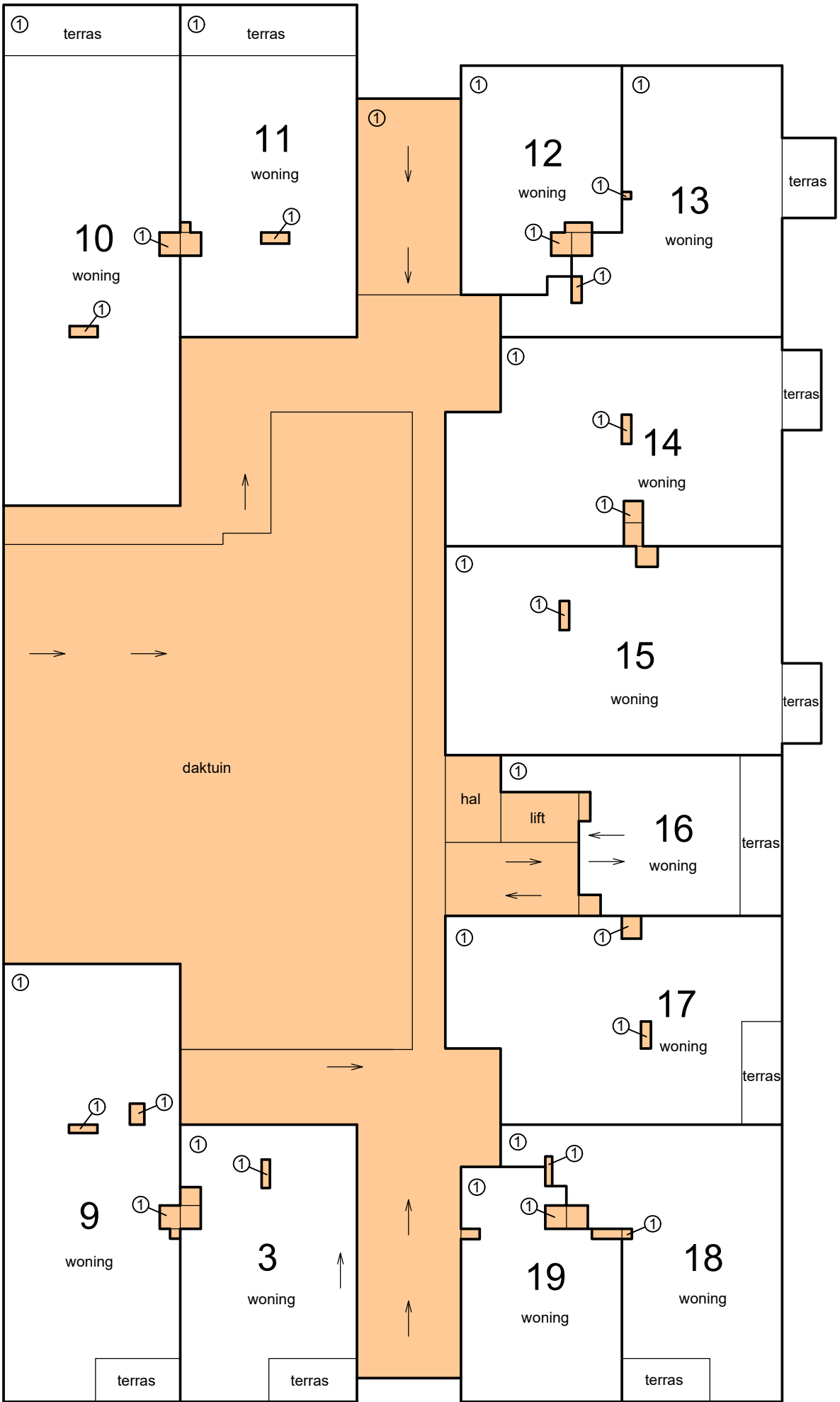
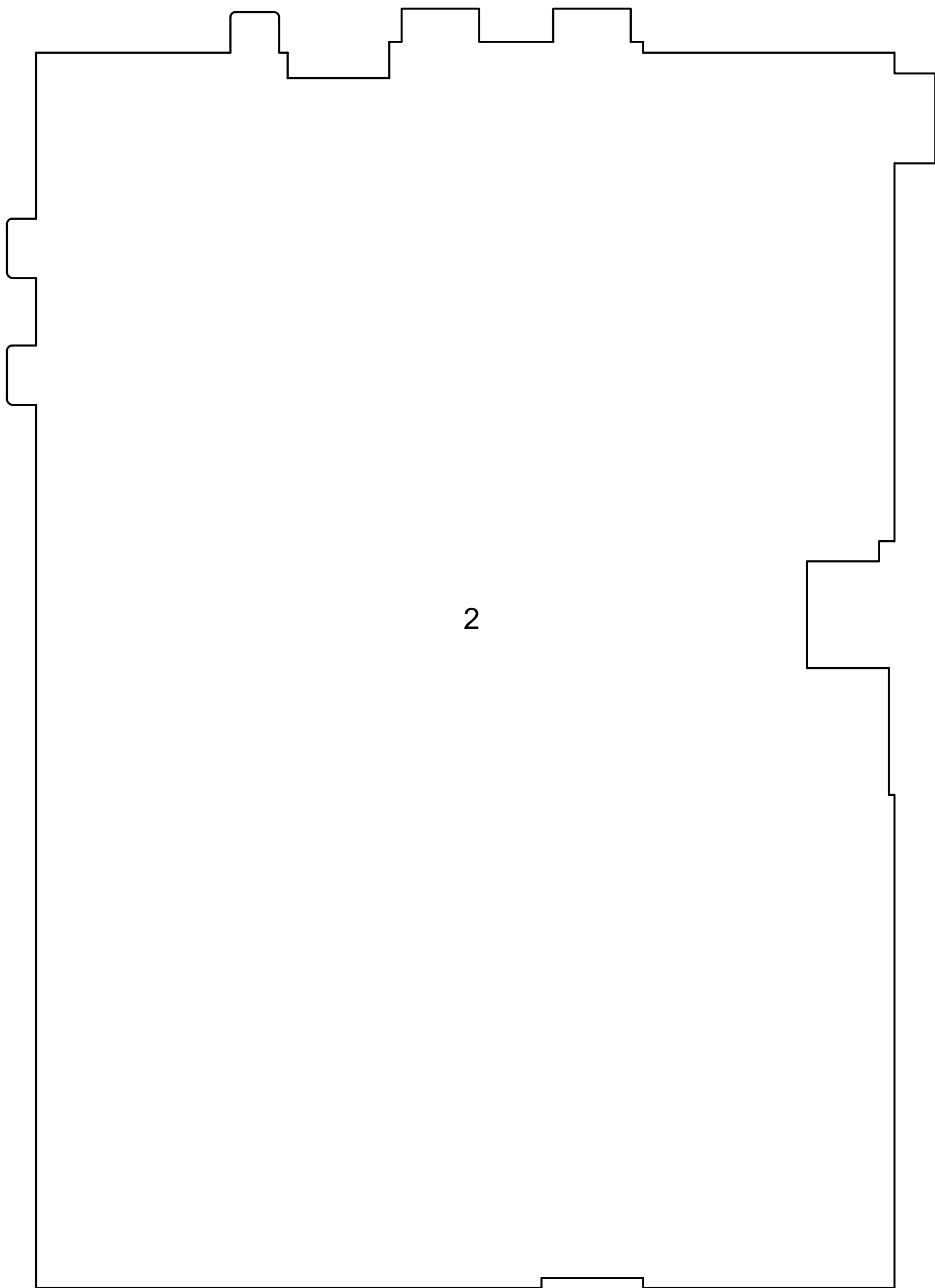
begane grond



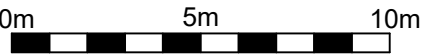
Situatie 1 : 1000 Leiden G



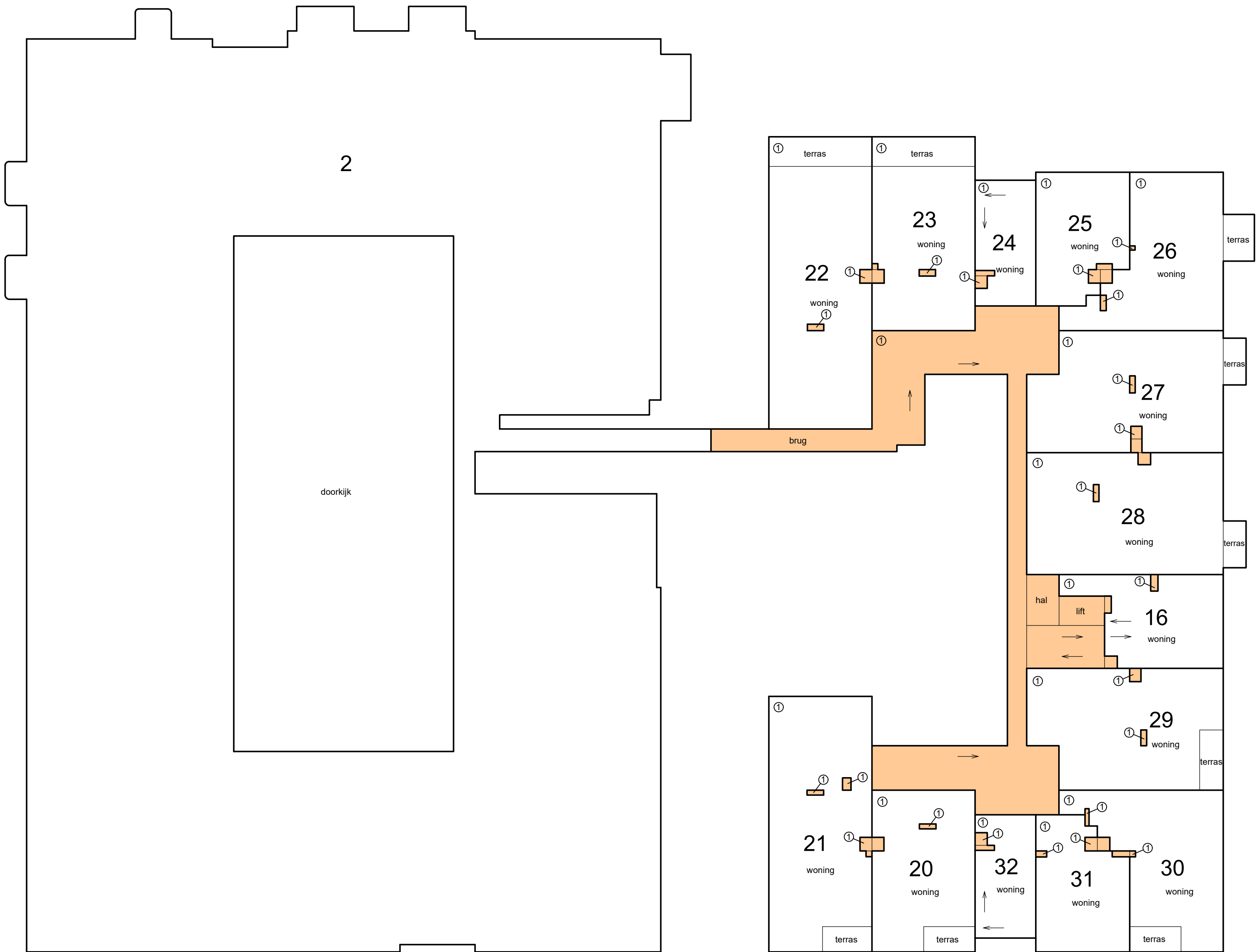
Schaal 1 : 200
= Gemeenschappelijk ondersplitsing A1
Tekening bestaat uit 7 bladen
Blad 2



1e verdieping



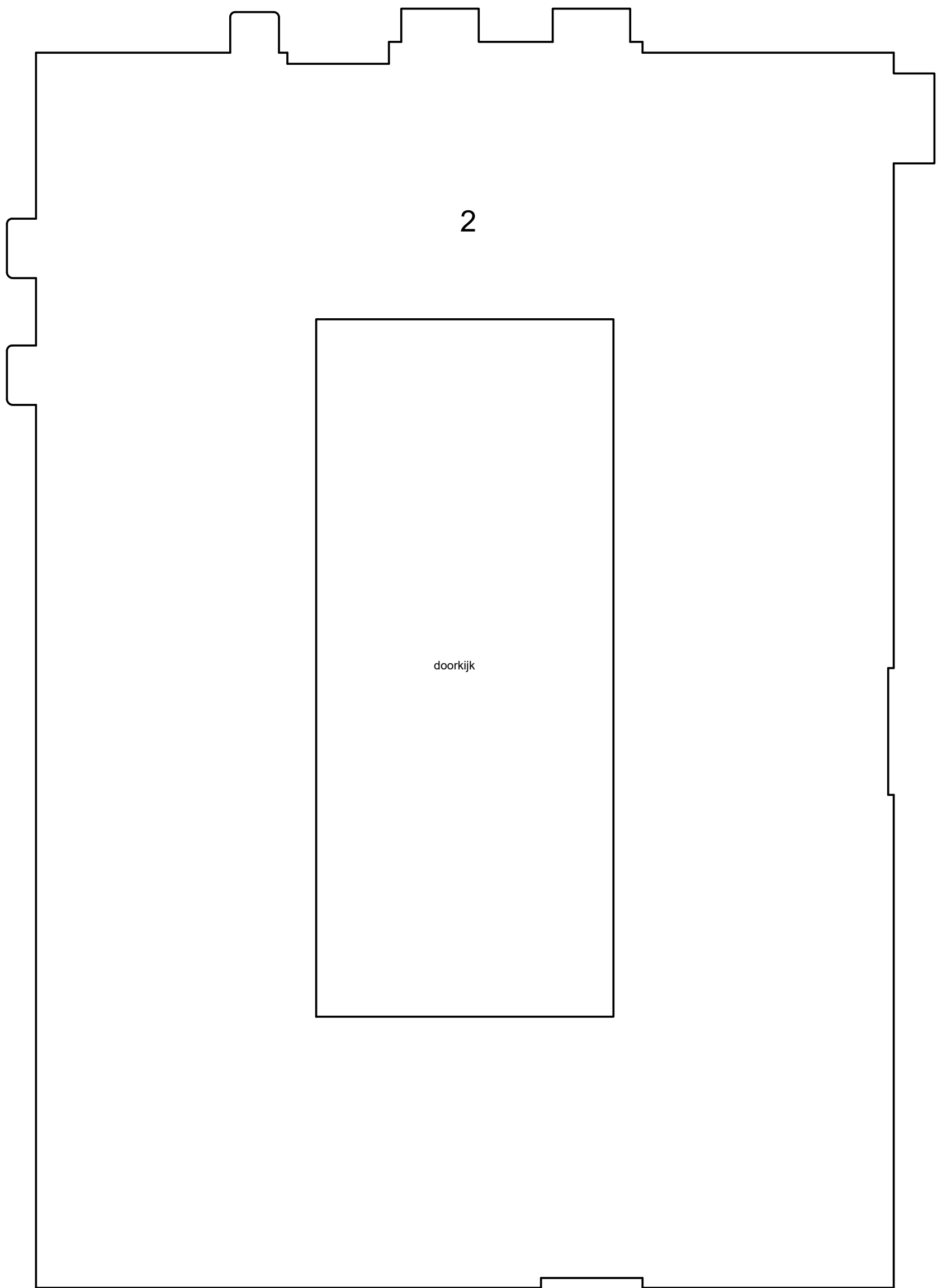
Schaal 1 : 200
= Gemeenschappelijk ondersplitsing A1
Tekening bestaat uit 7 bladen
Blad 3



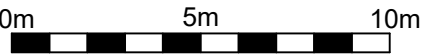
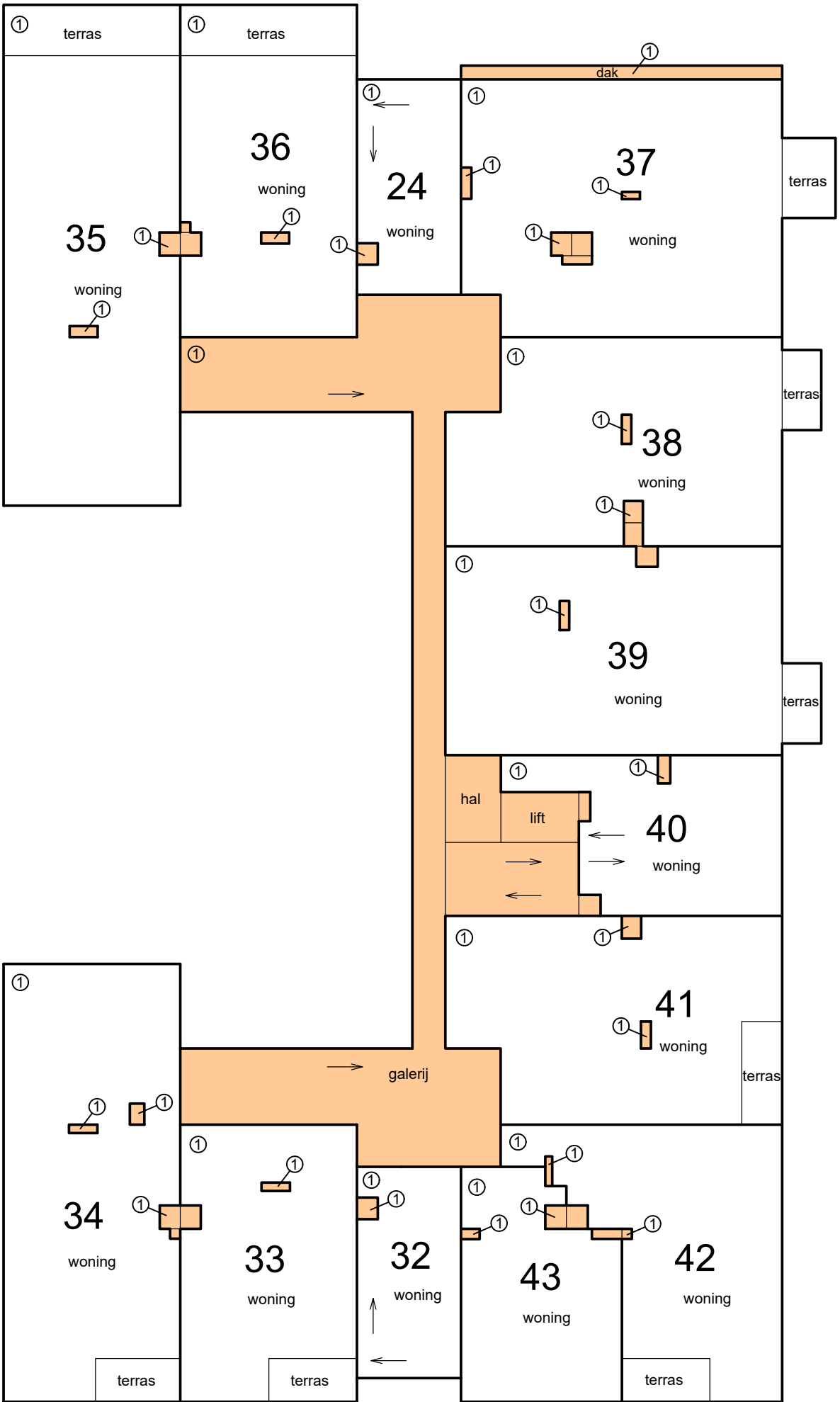
2e verdieping

0m 5m 10m

Schaal 1 : 200
= Gemeenschappelijk ondersplitsing A1
Tekening bestaat uit 7 bladen
Blad 4

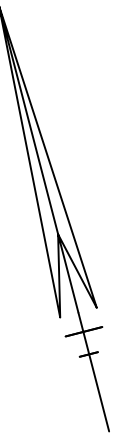
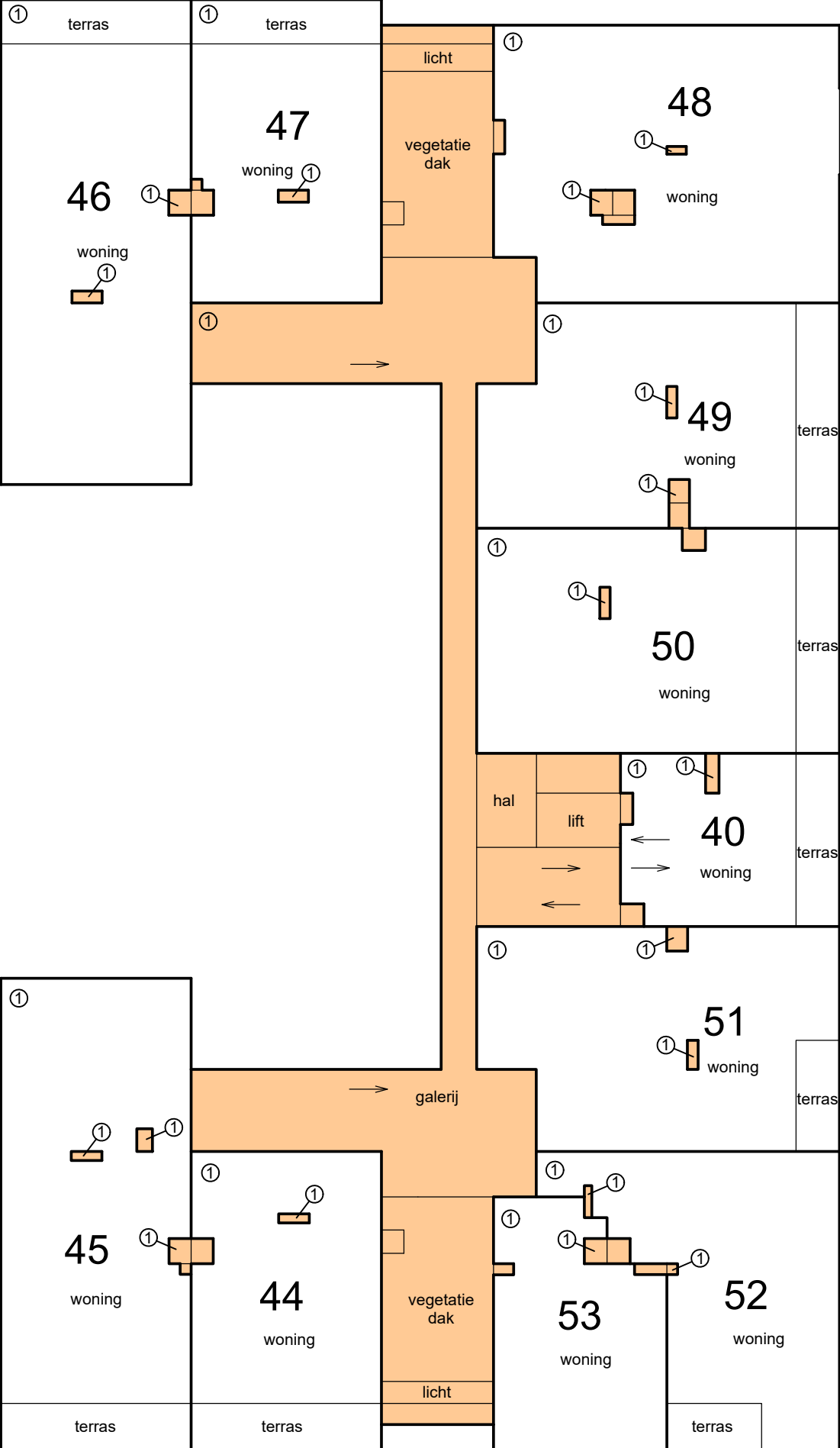


3e verdieping

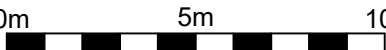


Grondperceel: Leiden G

Blad 5

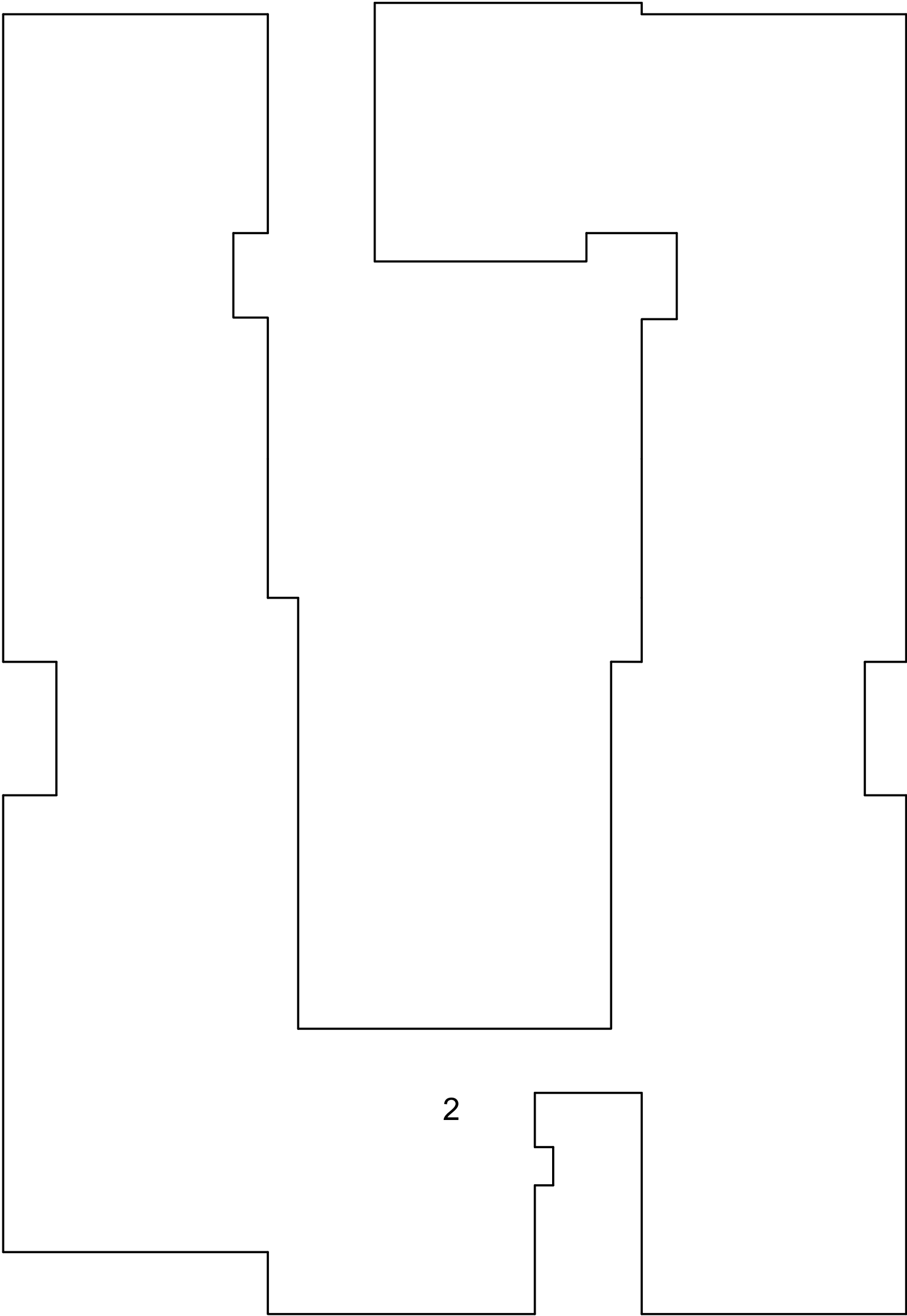


4e verdieping

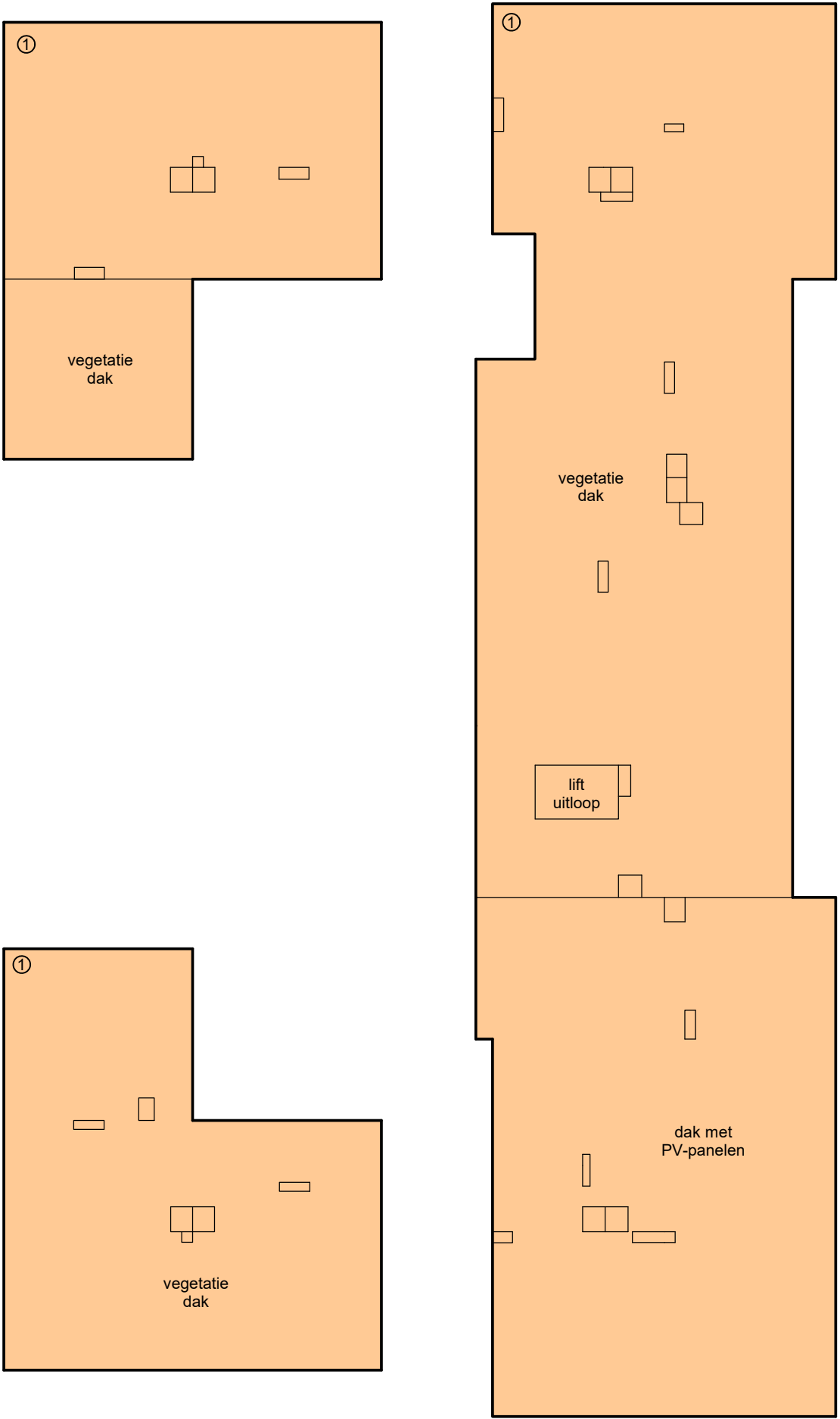


Complex Watt in Leider
versie 10 juni 2026

Schaal 1 : 200
= Gemeenschappelijk ondersplitsing A1
Tekening bestaat uit 7 bladen
Blad 6

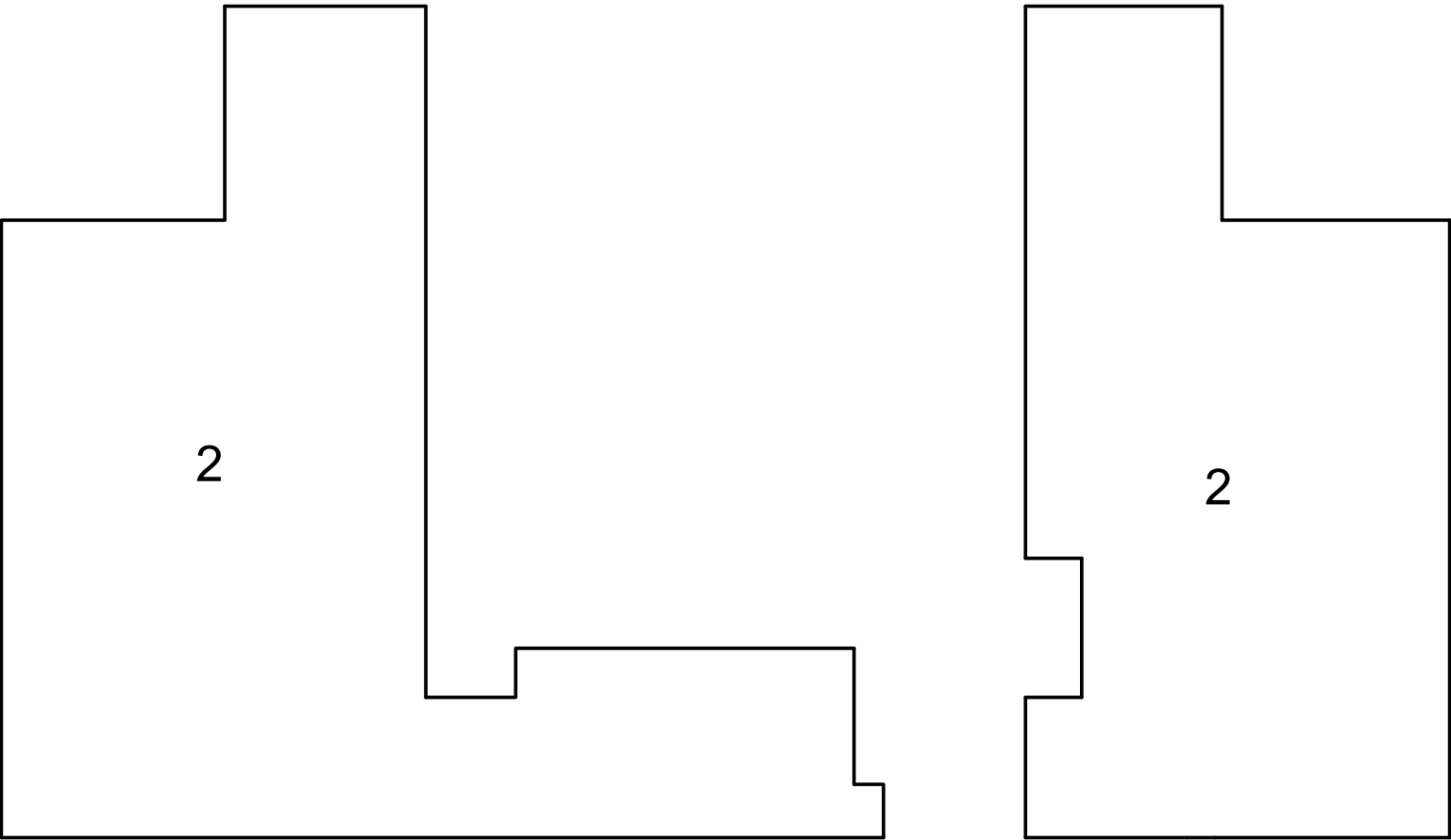


5e verdieping



0m 5m 10m

Schaal 1 : 200
= Gemeenschappelijk ondersplitsing A1
Tekening bestaat uit 7 bladen
Blad 7



dak

